

RCYC Sailing Ltd
ROYAL CORNWALL YACHT CLUB
INSHORE CLUB RACING 2025

*Organizing Authority: RCYC Sailing Ltd
04 April through to 19 September 2025
Greenbank, Falmouth, Cornwall, UK*

1st, 2nd and 3rd Points Series, Stewards Cup and Challenge Cup

SAILING INSTRUCTIONS (SIs)

*Abbreviations: [DP] – Rules for which the penalties are at the discretion of the protest committee.
[NP] - means that a boat may not protest another boat for breaking that rule. This changes RRS 60.1.*

1 RULES

- 1.1 Club racing is governed by the rules as defined in *The Racing Rules of Sailing*.
- 1.2 World Sailing Offshore Sailing Regulations (OSR) Appendix B for Inshore Racing shall apply except that:
- (a) For One Designs their own class association rules will apply.
 - (b) Adding to OSR 4.06.2, anchors shall not be carried forward of the stem or with any part outboard, except when anchoring.
- Local regulations will apply concerning safe navigation in close proximity of moorings, commercial and military vessels restricted in their ability to manoeuvre, and dive vessels (see SI 11).
- 1.3 The following rules are changed:
- a) No visual start signals will be given. This changes RRS 26.
 - b) Classes recalled will be restarted after the last scheduled start of other classes. This changes RRS 29.2.
 - c) Boats not finishing within 30 minutes of the first boat to finish will be scored DNF without a hearing. This changes RRS 35, A3, A4 & A5.
 - d) Flag V for Search and Rescue will not apply. This changes RRS 37.
 - e) [NP] For the MOCRA Class only the wearing of personal flotation devices (PFD's) will apply at all times. This changes RRS 40.1.
 - f) A two turns penalty is replaced by a one turn penalty. This changes RRS 44.1.
 - g) Failure to receive a radio signal will not be grounds for redress. This changes RRS 61.1(a).
 - h) In the event of conflict between the Notice of Race and the Sailing Instructions, then the SI's will prevail. This changes RRS 63.5 (c).
 - i) Start Window. A boat starting later than 4 mins after her starting signal shall be scored Did Not Start (DNS). This changes RRS A5.1 & A5.2.

- j) A boat, which does not take part in a race because its normal skipper is a member of the race management team, shall be awarded points for that race equivalent to equal first place (in the event of a series points tie then the boat that raced will take preference). If a skipper carries out race management duties on more than one occasion in a given series, then only the first duty will be eligible for the first place point's benefit. This changes RRS A5.1 & A5.2.
- k) Appendix WP applies (World Sailing/Docs/2025-28 App WP Rules for Waypoints Jan 2025).

2 CHANGES TO SAILING INSTRUCTIONS

- 2.1 Any change to the sailing instructions will be posted before 13:00 on the day it will take effect, except that any change to the schedule of races will be posted by 2000 on the day before it will take effect.
- 2.2 Oral changes to a sailing instruction will be made on the water using VHF channel 72.

3 COMMUNICATIONS WITH COMPETITORS

- 3.1 Notices to competitors will be posted on the official notice board located on the "Sailing Notice Board" in the main hall of RCYC and online at www.royalcornwallyachtclub.org "On the water/Club Racing/Club Racing 2025".
- 3.2 On the water, the race committee intends to monitor and communicate with competitors on VHF channel 72.
- 3.3 Notice of any shipping movements may be made by the race committee on VHF channel 72. In addition, a white flag may be displayed by the committee boat to warn competitors that a shipping movement may occur during the race.
Failure to hear a broadcast will not be grounds for redress. This changes RRS 61.1(a).
- 3.4 [DP] [NP] From the first warning signal (for your class) until the end of your race, except in an emergency, a boat shall not make voice or data transmissions and shall not receive voice or data communication that is not available to all boats.

4 CODE OF CONDUCT

- 4.1 [DP] Competitors and support persons shall comply with reasonable requests from race officials.

5 SIGNALS MADE ASHORE

- 5.1 Signals made ashore will be displayed on the flag mast at RCYC.

6 SCHEDULE OF RACES

6.1 Dates of racing:

Event	Dates
Series 1	April 4, 11, 18, 25, May 2, 9
Stewards Cup	May 16
Series 2	May 23, 30, June 6, 13, 20, 27, July 4
Challenge Cup	July 11
Series 3	July 18, 25, Aug 1, 8, 22, 29, Sep 5
Joint Pursuit Series	RCYC 12 and 19 Sep FSC 16 and 23 Sep (Prize giving at FSC after racing)
Prize giving RCYC	Saturday October 11

7 CLASS FLAGS

7.1 The class flags are:

CLASS		FLAG
MOCRA	Multihull	no flag required
IRC 1	TCF >0.986	IC Flag 1
IRC 2	TCF <0.985	IC Flag 2
Sunbeam		no flag required
E	YTC <1030	IC Flag E
W	YTC >1031	IC Flag W

7.2 [NP] Class flags shall be displayed from the backstay or mainsail leech.

8 RACING AREA

8.1 Starts will be within Carrick Roads. The racing area is Carrick Roads and Falmouth Bay.

9 COURSES

- 9.1 The list of courses available to the Race Officer (RO) are shown in SI Addendum A. *He may, however at his own discretion, select a "Race Officer's Choice" course using the marks as stated in SI Addendum B.*
- 9.2 Course information for all classes will be broadcast by VHF at 18:00 and repeated at 18:05. The individual class course will be announced after the preparatory signal.
- 9.3 For M Class only: Finish at the Gate and in the event that a committee boat is not on station, the competitor should record their finish time and submit it by email to Contact@rcycsailing.org as soon as possible.
- 9.4 If two rounds are designated the Gate becomes the last mark of the first round and boats must pass through the gate before commencing the second round.
- 9.5 Virtual Marks – where any virtual marks are specified, competitors are required to prove that they have completed the course in the correct manner.

10 MARKS

- 10.1 Marks are as shown in Addendum B.
- 10.2 The Gate is formed by the Speed Limit Buoys and will be the penultimate mark of every course. Boats should pass through the gate before proceeding to the finish.

11 OBSTRUCTIONS

- 11.1 Mooring areas: Straight lines between the course sides of the mooring buoys (whether a vessel is attached or not) of the outer line on both sides of the fairway are designated as continuing obstructions - see Addendum C.
- 11.2 [NP] Commercial shipping: Moving exclusion zones around commercial vessels constricted by their draft or size are designated obstructions. Such exclusion zones extend to 100m on all sides of the vessel and include tugs, pilot boats and safety boats escorting the vessel. No competitor is at any time to enter the exclusion zone, and, if becalmed, is to use their engine or other means of propulsion to move out of the way. This should only be sufficient to move out of the exclusion zone, and the distance travelled should be the shortest necessary to keep clear. Competitors who unnecessarily interfere with shipping bring the sport into disrepute and shall be reported by the race committee under RRS 69 – Misconduct.
- 11.3 St Mawes south cardinal buoy (Lugo Rock): St Mawes south cardinal buoy is designated an obstruction and as such boats shall always pass to seaward of the buoy.
- 11.4 Diving activity: A 30m exclusion zone around a dive boat displaying IC flag A, an orange pillar mark indicating a diver beneath the surface, and a diver on the surface are designated obstructions. No competitor is at any time to enter the exclusion zone.

12 THE START

- 12.1 Races will be started using RRS 26 with the warning signal made 5 minutes before the starting signal. Start times will be as follows:

Class Flag	Class		Start Time
	Orange Flag	By 18.00	
	Warning - MOCRA	18.05	
M	MOCRA		18.10
1	IRC 1		18.15
2	IRC 2		18.20
E	YTC		18.25
V	Sunbeam		18.30

- 12.2 The starting line will be between a mast displaying an orange flag on the committee vessel and an orange buoy.
- 12.3 Boats whose warning signal has not been made shall avoid the starting area during the starting sequence for other races.
- 12.4 After rounding the first mark, boats shall not pass through the starting line in either direction.
- 12.5 If any part of a boat's hull is on the course side of the starting line at her starting signal and she is identified, the race committee will attempt to announce her sail number by VHF radio. Failure to announce her number, failure of her to hear such an announcement, or the order in which boats are announced will not be grounds for a request for redress. This changes RRS 61.1(a).
- 12.6 A boat that does not start within 4 minutes after her starting signal will be scored Did Not Start without a hearing. This changes RRS A5.1 and A5.2.

- 12.7 General Recalls: IC Flag First Substitute will be displayed until all boats have returned or until 4 minutes after the starting signal whichever is earlier. The starting signal of the last class in the start sequence will be the warning signal of the recalled class. In the event of general recall of more than one class the restarts of the recalled classes will be in the same order as the scheduled starts. This changes RRS 29.2.

13 CHANGE OF THE NEXT LEG OF THE COURSE – not used.

14 THE FINISH

- 14.1 Finishing Line – RCYC Transit: The line is a transit through the RCYC flagpole and a white triangle above and behind the clubhouse, which is defined at its inner end by the line of moorings and its outer end by Flushing New Quay.

15 PENALTY SYSTEM

- 15.1 RRS 44.1 is changed so that the Two-Turns Penalty is replaced by the One-Turn Penalty.

16 TIME LIMITS [AND TARGET TIMES]

- 16.1 The Target Time will be approximately 90 minutes with a Time Limit for the first boat of each class to sail the course and finish of 120 minutes. Boats failing to finish within 30 minutes of the first boat will be scored DNF (Did Not Finish). This changes RRS 35, A4 & A5.
- 16.2 Failure to meet the Target Time will not be grounds for redress. This changes RRS 61.1(a).

17 HEARING REQUESTS

- 17.1 For each class, the protest time limit is 60 minutes after the last boat in that class finishes the race. Protests and requests for redress or re-opening shall be delivered to the sailing office within the appropriate time limit.
- 17.2 Written details should be lodged with the race office at:
- (a) www.royalcornwallyachtclub.org “On the water/Club Racing/Club Racing 2025”
 - (b) on the “Sailing Notice Board” in the main hall of the RCYC clubhouse.
- 17.3 Notices will be posted no later than 30 minutes after the protest time limit to inform competitors of hearings in which they are parties or named as witnesses. Hearings will be held in a designated protest room, located at the RCYC clubhouse, beginning at the time posted.

18 SCORING

- 18.1 Excluding stand-alone races (Stewards Cup and Challenge Cup), 3 races are required to be completed to constitute a series.
- 18.2 (a) A boats series score is the total of her race scores when fewer than 5 races have been completed.
- (b) When 5 to 6 races have been completed a boat’s series score will be the total of her race scores excluding her worst score.
- (c) When 7 or more races have been completed a boat’s series score will be the total of her race scores excluding her two worst scores.
- 18.3 RRS Rule A5.3 will apply.

19 SAFETY REGULATIONS

- 19.1 [DP] A boat that retires from a race shall notify the race committee by radio on Channel 72 or by telephoning the Sailing Office on 01326 311105 as soon as possible and no longer than 60 minutes after finishing or retiring. Competitors not adhering to this procedure may be subject to protest by the race committee and the penalty for breach of this instruction may be less than or greater than disqualification.
- 19.2 [NP] For the MOCRA Class only RRS 40.1 is changed as follows: The wearing of personal flotation devices (PFD's) will apply at all times.

20 REPLACEMENT OF CREW OR EQUIPMENT – not used

21 EQUIPMENT AND MEASUREMENT CHECKS

- 21.1 A boat or equipment may be inspected at any time for compliance with the class rules, notice of race and sailing instructions.

22 SUPPLIED BOATS – not used.

23 OFFICIAL VESSELS

- 23.1 Official vessels will be identified as follows:
- (a) Committee Vessel – orange or blue flag
 - (b) RCYC ribs – RCYC written on hulls.

24 [DP] SUPPORT TEAMS – not used

25 TRASH DISPOSAL

No facilities for trash disposal on the water will be provided.

26 BERTHING – not used

27 HAUL-OUT RESTRICTIONS – not used

28 DIVING EQUIPMENT AND PLASTIC POOLS – not used

29 PRIZES

- 29.1 In addition to Club Trophies for first boats, keeper prizes will be awarded as follows:
- (a) Average 7 or more starters – prizes for 1st, 2nd & 3rd
 - (b) Average 4 – 6 starters – prizes for 1st & 2nd
 - (c) Less than an average of 4 starters – prizes for 1st
- All the season's prizes will be presented at RCYC at 20:00hrs on Saturday 11th Oct 2025.

30 RISK STATEMENT

- 30.1 Rule 3 of the Racing Rules of Sailing states: "The responsibility for a boat's decision to participate in a race or to continue racing is hers alone". Sailing is by its nature an unpredictable sport and therefore inherently involves an element of risk. By taking part in the event, each competitor agrees and acknowledges that:
- (a) They are aware of the inherent element of risk involved in the sport and accept responsibility for the exposure of themselves, their crew and their boat to such inherent risk whilst taking part in the event;
 - (b) They are responsible for the safety of themselves, their crew, their boat and their other property whether afloat or ashore;
 - (c) They accept responsibility for any injury, damage or loss to the extent caused by their own actions and omissions;
 - (d) Their boat is in good order, equipped to sail in the event and they are fit to participate;
 - (e) The provision of a race management team, patrol boats and other officials and volunteers by the event organiser does not relieve them of their own responsibilities;
 - (f) The provision of patrol boat cover is limited to such assistance, particularly in extreme weather conditions, as can be practically provided in the circumstances.
 - (g) It is their responsibility to familiarise themselves with any risks specific to this venue or this event drawn to their attention in any rules and information produced for the venue or event and to attend a safety briefing held for the event.

31 INSURANCE

- 31.1 Each participating boat shall be insured with valid third-party liability insurance with a minimum cover of £3,000,000 per incident or the equivalent.

ADDENDUM A – COURSES

Carrick Roads Committee Boat (CB) starts.

One round

Asterix * = course containing a virtual mark

North (Group 1)		Com Boat between G & SN, G & CA or N of BR								Distance
101	Vp	Gate	Fin							2.3
102	NBp	Gate	Fin							3.1
103	Jp	Gate	Fin							3.4
104	Vp	Pp	CCp	Gate	Fin					4.6
105	Vp	Gp	CAP	WTp	Gate	Fin				5.1
106	Vp	Gp	WNp	Jp	Gate	Fin				5.2
107	Vp	Gp	CAP	Jp	Gate	Fin				5.7
108	NBp	Tp	BRp	NBp	Gate	Fin				7.0
109	Vp	Gp	BRp	CCp	Pp	Vp	Gate	Fin		7.2
110	MEp	Pp	CCp	Gate	Fin					7.3
111	Vp	Gp	Zp	WNp	BRp	Vp	Gate	Fin		8.0
112	NBp	Pp	NBp	Pp	WNp	Gate	Fin			8.1
113	PLp	PWp	Jp	PLp	Gate	Fin				8.9
114	NBp	Tp	BRp	Vp	BRp	NBp	Gate	Fin		9.7
115*	NBp	Cs	BRp	Cs	CAP	WNp	Gate	Fin		11.5
116*	Vp	Cs	HDs	OWp	Zp	Cs	Gate	Fin		11.9

North East (Group 2)		Comm Boat S of T, btwn G & Docks, SE of G								Distance	
201	Vp	Gate	Fin							2.2	
202	Jp	Gate	Fin							3.3	
203	Vp	Sp	Gp	Wp	Gate	Fin				3.9	
204	Jp	Vp	Jp	Gate	Fin					4.5	
205	Vp	Sp	Pp	Wp	Gate	Fin				4.6	
206	WTs	Gp	WNs	Pp	SNp	Gate	Fin			5.2	
207	Jp	Tp	Jp	Gate	Fin					5.5	
208	WTs	GYs	BRp	Gate	Fin					6.5	
209	WTs	BRp	STs	CNs	Gate	Fin				6.4	
210	WTs	CAP	STs	CAP	STs	Gate	Fin			6.7	
211	Jp	Tp	PBs	CCp	Jp	Gate	Fin			7.6	
212	Jp	NBp	CNs	Ms	BRp	Gate	Fin			10.2	
213	WTs	Np	BRp	Gate	Fin					12.1	
214*	Vp	Sp	Cp	Zp	GYs	CAP	Ps	CCp	Gate	Fin	10.7

Incorporated as RCYC Sailing Ltd. Reg Office: Falmouth, Cornwall TR11 2SP.

Reg in England & Wales No 07438291

CARRICK ROADS COMMITTEE BOAT STARTS

One Round

East (Group 3)		Comm Boat T, Eastern Arm, SW of G								Distance
301	WNp	Gate	Fin							2.2
302	WNp	Vp	Gate	Fin						2.8
303	WNp	Vp	Gp	WNp	Gate	Fin				4.0
304	Ws	Gate	SNs	Gate	Fin					3.9
305	SNs	Pp	STs	Gate	Fin					4.8
306	SNs	Gp	STs	BRs	Gate	Fin				5.0
307	CCs	Gp	STs	Pp	CAp	Gate	Fin			5.9
308	SNs	GYp	CNp	Gate	Fin					6.1
309	WNp	NBp	Gp	STs	Gate	Fin				6.4
310	SNs	Ts	SNs	Gp	STs	Gate	Fin			6.6
311	SNs	Ts	SNs	Gp	STs	Pp	CNp	Gate	Fin	8.1
312	SNs	GYp	Zp	GYp	Pp	Gate	Fin			8.6
313	SNs	GYp	Zp	GYp	CAp	Gate	Fin			9.0
314	SNs	BRs	Mp	Zp	HDs	CAp	Gate	Fin		9.9
315	SNs	BRs	GYp	Zp	GYp	Zp	WNp	Gate	Fin	10.2

South East (Group 4)		Comm Boat near T or S								Distance
401	WNs	Gate	Fin							2.0
402	CAp	Wp	Gate	Fin						3.2
403	CAp	CCp	Gate	Fin						3.4
404	CNp	Vp	Gate	Fin						4.3
405	WNs	Tp	CAp	Wp	Gate	Fin				4.6
406	CAp	Tp	CAp	Gate	Fin					5.3
407	CAp	Vp	Tp	CAp	SNp	Gate	Fin			5.8
408	CAp	Vp	Tp	CNp	SNp	Gate	Fin			6.5
409	CNp	Tp	CNp	Gate	Fin					6.6
410	CNp	Vp	Tp	CNp	CCp	Gate	Fin			7.6
411	BRp	Sp	Zs	Gate	Fin					7.4
412	Zs	Gs	Jp	Sp	WNs	Gate	Fin			7.4
413	CNp	Tp	CNp	Tp	CNp	Gate	Fin			9.6
414	Zs	GYs	Zs	GYs	BRp	Gate	Fin			10.1
415*	Zs	GYs	OWp	HDs	CAp	Gs	CAp	Gate	Fin	11.2

CARRICK ROADS COMMITTEE BOAT STARTS

One Round

South (Group 5)		Comm Boat W of V, E of V, W of NB										Distance
501	Gs	Gate	Fin									2.2
502	Pp	WNp	Gate	Fin								3.3
503	Pp	Vp	Gate	Fin								3.9
504	CAP	CCp	Gs	Gate	Fin							4
505	Pp	SNs	BRs	Gate	Fin							4.4
506	Pp	NBp	Gate	Fin								4.6
507	Pp	CNs	Zs	Gate	Fin							5.1
508	CAP	Ts	Js	Ws	Gate	Fin						5.7
509	CAP	Ts	Js	SNs	Gate	Fin						6.1
510	BRs	Ss	BRs	Gate	Fin							6.3
511	Pp	PWs	BRs	Gate	Fin							6.8
512	Pp	SNs	Zs	Vp	Gs	Gate	Fin					7.2
513	Zs	GYs	Vp	Gate	Fin							7.3
514	Pp	MEs	BRs	Gate	Fin							8.5
515	Pp	NBp	Pp	WTs	BRs	Gate	Fin					9.2
516	Pp	NBp	Pp	NBp	Pp	Vp	Gate	Fin				10.3
517*	Cp	BRp	Cp	HDs	CAP	WNp	Gate	Fin				9.9
518	Zs	Ts	PBs	Ws	NBp	Pp	Vp	Gs	Gate	Fin		11.6
519*	Cp	CAP	Vp	BRs	Vp	Gs	Gate	Fin				10.5

South West (Group 6)		Comm Boat btwn WT & W or SN to S of CA										Distance
601	Gp	WNp	Gate	Fin								2.3
602	Gp	WNp	Vp	Gate	Fin							3
603	Gp	WNp	Vp	Tp	Vp	Gate	Fin					4
604	Pp	SNp	WTp	Gate	Fin							3.5
605	Gp	WNp	NBp	Tp	CCs	Gate	Fin					4.8
606	Pp	STs	BRs	Vp	Gate	Fin						5.8
607	Gp	STs	BRs	Jp	Gate	Fin						6.1
608	Gp	WNp	Jp	Tp	Jp	Gate	Fin					6.3
609	Pp	STs	BRs	Jp	Gate	Fin						6.8
610	Gp	PBp	Tp	CCs	Gate	Vp	Gate	Fin				7.3
611	GYs	STs	BRs	Wp	Gate	Fin						7.5
612	Pp	STs	GYs	Vp	Gate	Fin						7.8
613	Gp	Jp	Tp	Jp	Tp	Jp	Gate	Fin				8.5
614	Pp	CNs	Ms	CAP	Gate	Fin						8.5
615	Pp	CNs	Rs	CAP	Gate	Fin						9.1
616	HDs	PBp	Gp	NBp	Tp	WTs	Gate	Fin				9.8
617	Gp	Zs	Rs	Pp	Vp	Gate	Fin					9.6

Incorporated as RCYC Sailing Ltd. Reg Office: Falmouth, Cornwall TR11 2SP.

Reg in England & Wales No 07438291

CARRICK ROADS COMMITTEE BOAT STARTS
One Round

West (Group 7)		Comm Boat between WT & SN							Distance
701	Gate	Fin						1.6	
702	Gate	Wp	Gate	Fin				3.1	
703	Gate	Gp	WNp	Gate	Fin			3.2	
704	Gate	Gp	Wp	Vp	Gate	Fin		3.9	
705	Gate	STs	Gate	Fin				5	
706	Gate	CNs	Ps	CNs	BRs	Gate	Fin	5.8	
707	Gate	STs	Ps	Wp	Gate	Fin		6	
708	Gate	CNs	GYs	Gate	Fin			6.5	
709	Gate	CNs	Ps	STs	BRs	Gate	Fin	6.9	
710	Gate	CNs	GYs	WNp	Gate	Fin		7	
711	Gate	CNs	GYs	Wp	Gate	Fin		7.3	
712	Gate	CNs	GYs	STs	Ps	WNp	Gate	Fin	8.8
713	Gate	Zs	Ms	WNp	Gate	Fin		9.4	
714	Gate	CNs	Ms	CCp	Gate	Fin		9.5	
715	Gate	Zs	GYs	STs	Ps	STs	Gate	Fin	11.1
716*	Gate	Zs	OWs	Ms	CAP	WNp	Gate	Fin	10.7

North West (Group 8)		Comm Boat between BR & Lugo							Distance	
801	Gate	Fin						1.6		
802	Vp	Gs	Gate	Fin				2.9		
803	Ts	WNs	Gs	Gate	Fin			3.2		
804	Vp	BRs	Gate	Fin				4.1		
805	Vp	CAP	Vp	Gate	Fin			4.3		
806	Ts	CNs	Gate	Fin				4.5		
807	Vp	STs	BRs	Gate	Fin			5.2		
808	Vp	CNs	Gs	CAP	Gate	Fin		5.3		
809	Vp	Zs	Gate	Fin				5.4		
810	Ts	STs	BRs	Gate	Fin			5.5		
811	Ts	CNs	Ts	CAP	Gate	Fin		6.7		
812	Vp	Zs	Ts	CAP	Gate	Fin		7.6		
813	Ts	Zs	GYs	CAP	Gate	Fin		7.7		
814	Ts	Zs	Gs	Zs	Gate	Fin		8		
815	Ts	Zs	Ts	CNs	Ts	Ws	BRs	Gate	Fin	11.4
816*	Ts	OWs	GYs	Cp	HDs	OWs	Gate	Fin	13.4	

ADDENDUM B – MARKS

CHART OF MARKS FOR CARRICK RACING

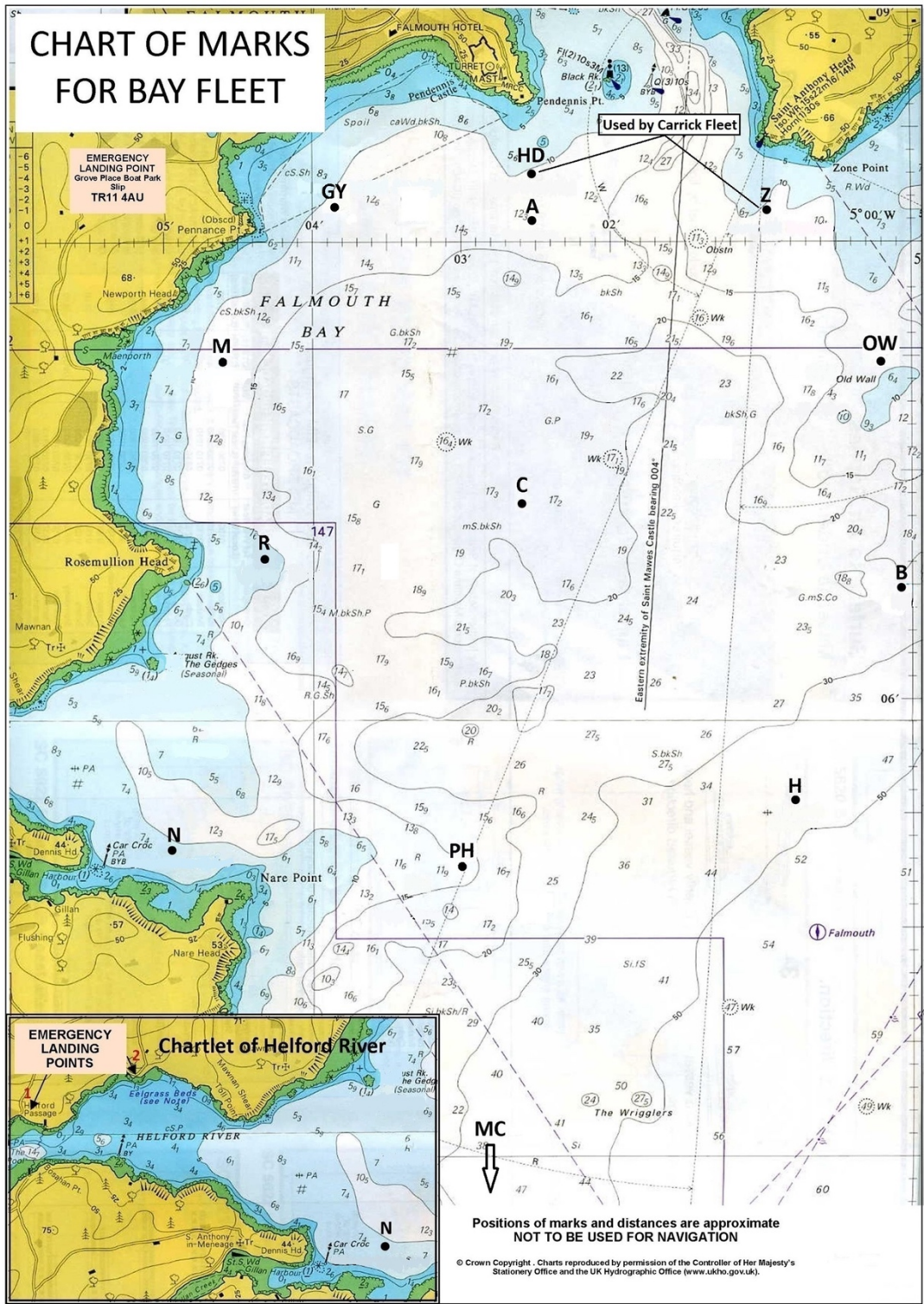


Not all of the marks are laid permanently
Positions of marks and distances are approximate
NOT TO BE USED FOR NAVIGATION

© Crown Copyright. Charts reproduced by permission of the Controller of Her Majesty's Stationery Office and the UK Hydrographic Office (www.ukho.gov.uk).

Incorporated as RCYC Sailing Ltd. Reg Office: Falmouth, Cornwall TR11 2SP.

Reg in England & Wales No 07438291

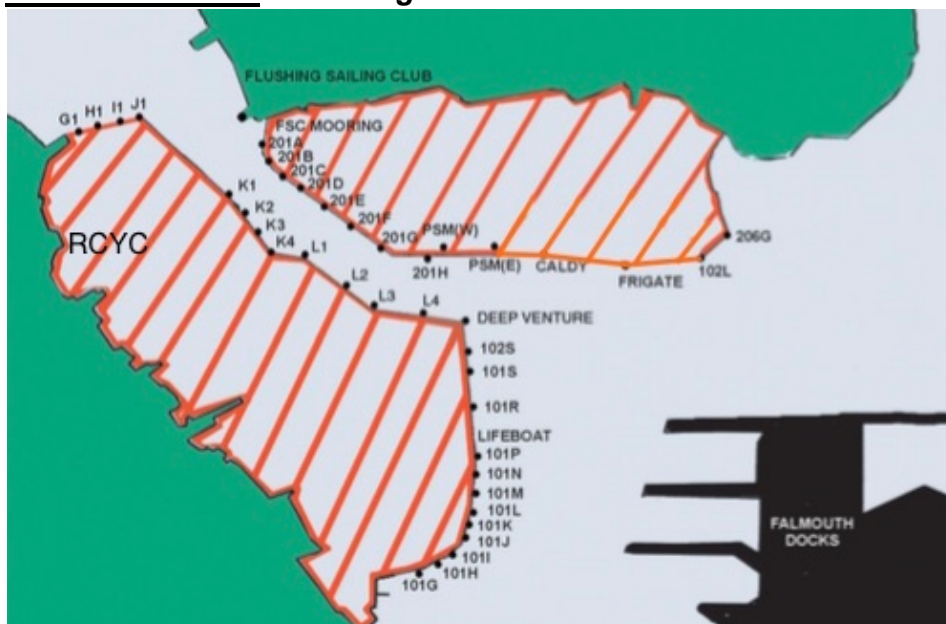


Incorporated as RCYC Sailing Ltd. Reg Office: Falmouth, Cornwall TR11 2SP.

Reg in England & Wales No 07438291

CODE	OLD MARK NAMES	SPONSORED MARK NAMES	DESCRIPTION	LAT	LONG
BR	Black Rock Buoy		Port Lateral	50 08.68 N	005 01.74 W
C	Central		VIRTUAL MARK	50 06.77 N	005 02.42 W
CA	Castle		Starboard Lateral	50 09.00 N	005 01.65 W
CC	Cream Cornwall	Cream Cornwall	Yellow spherical	50 09.80 N	005 02.09 W
CN	Carricknath	SKB Sails	Yellow spherical	50 08.73 N	005 01.22 W
G	Governor		East Cardinal	50 09.15 N	005 02.40 W
GATE	Speed Limit Buoy	No 1	Yellow Special Purpose	50 09.54 N	005 03.20 W
GATE	Speed Limit Buoy	No 2	Yellow Special Purpose	50 09.62 N	005 03.21 W
GY	Gyllyngvase	Penryn Dental Practice	Yellow spherical wit	50 08.12 N	005 03.87 W
HD	Headland	Hine-Downing	Yellow spherical	50 08.39 N	005 02.76 W
J	St Just		Port Lateral	50 10.44 N	005 01.72 W
M	Maenporth	SW Ventilation	Yellow spherical	50 07.50 N	005 04.80 W
ME	Messack		Port Lateral	50 11.32 N	005 02.20 W
N	Nare		Yellow spherical	50 05.37 N	005 04.88 W
NB	North Bank		Port Lateral	50 10.37 N	005 02.13 W
OW	Old Walls		VIRTUAL MARK	50 07.35 N	005 00.55 W
P	Pendennis	Fal Black Rock Gin	Yellow spherical	50 08.78 N	005 02.10 W
PB	Pasco's	Pasco's Boatyard	Yellow spherical	50 10.75 N	005 01.45 W
PL	Pill		Port Lateral	50 12.06 N	005 02.39 W
PW	Penarrow	Mylor Yacht Harbour	Yellow spherical	50 10.48 N	005 02.34 W
R	Rosemullion	Heather & Lay	Yellow spherical	50 06.61 N	005 04.36 W
S	Sunbeam	Mylor Yacht Harbour	Yellow spherical	50 09.99 N	005 02.67 W
SN	South Narrows	A2 Rigging	Yellow spherical	50 09.30 N	005 01.79 W
ST	St Mawes Turn Mark		Flag T Blue Cone	50 09.40 N	005 00.79 W
T	Trefusis	Penrose Sailmakers	Yellow Truncated Cone	50 09.60 N	005 03.00 W
V	Vilt		Starboard Lateral	50 09.99 N	005 02.28 W
W	Waterloo	Mylor Chandlery & Rigging	Yellow Truncated Cone	50 09.60 N	005 01.93W
WN	West Narrows		Port Lateral	50 09.39 N	005 02.37 W
WT	Water tower	Ancasta	Yellow	50 10.13 N	005 01.90 W
Z	Zone	Falmouth Boat Co.	Orange or Yellow Cone	50 08.15 N	005 01.10 W

ADDENDUM C - Mooring Plan Falmouth Harbour



Incorporated as RCYC Sailing Ltd. Reg Office: Falmouth, Cornwall TR11 2SP.

Reg in England & Wales No 07438291